

MINUTES OF THE 60th SLCF MEETING HELD ON 24.01.2020

Shri. P. K. Kundu, Chief Engineer (SLDC), WBSETCL & Chairperson, SLCF welcomed all the participant members to the 60th SLCF meeting.

ITEM-1: CONFIRMATION OF THE MINUTES OF THE 59th SLCF MEETING HELD ON 23/09/2019.

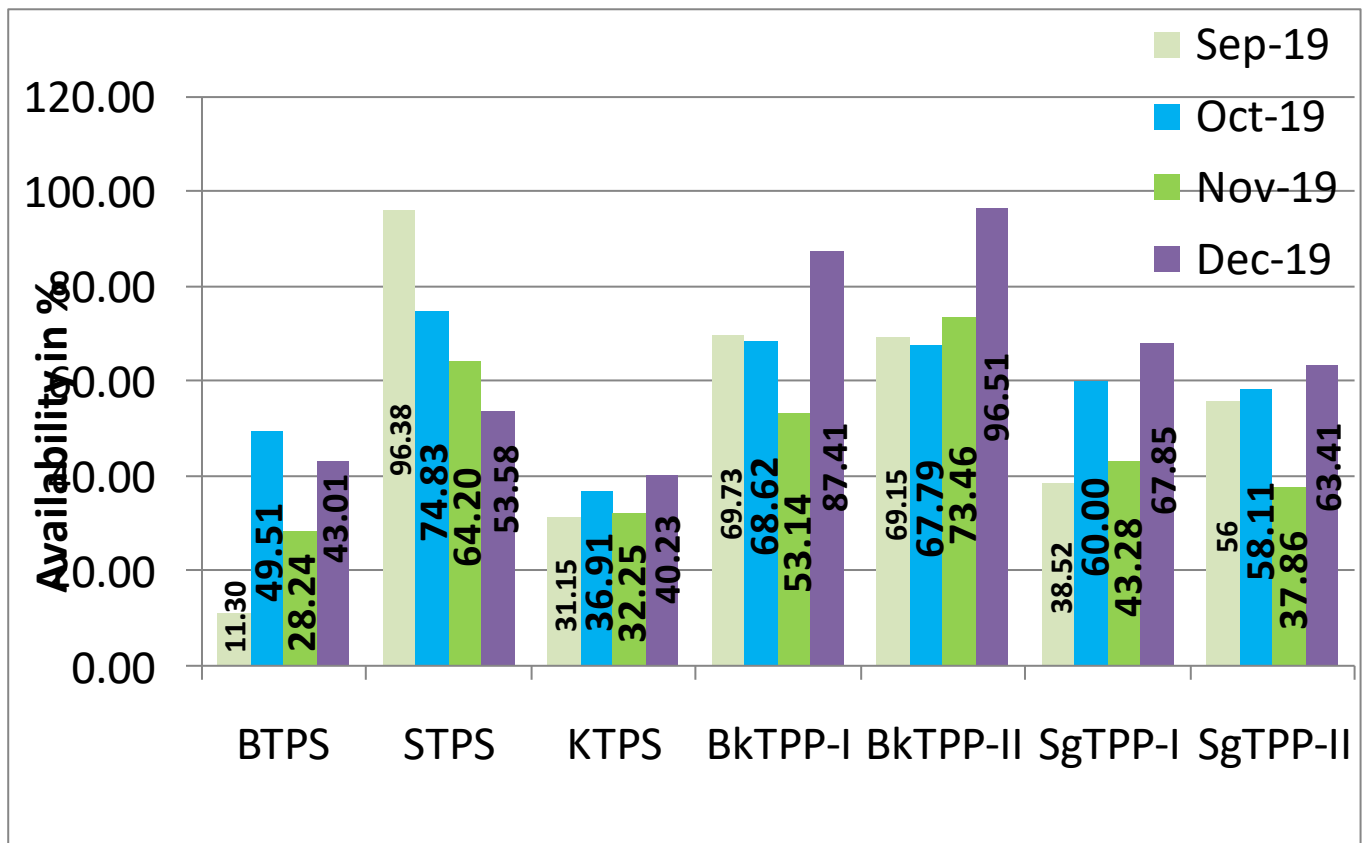
The minutes were circulated vide memo no: **SLDC/How/109/2019-20/924** dated 27/11/2019 and the same was also published in the website(www.wbslhc.in).

ITEM-2: REVIEW OF THE STATE GRID PERFORMANCE:

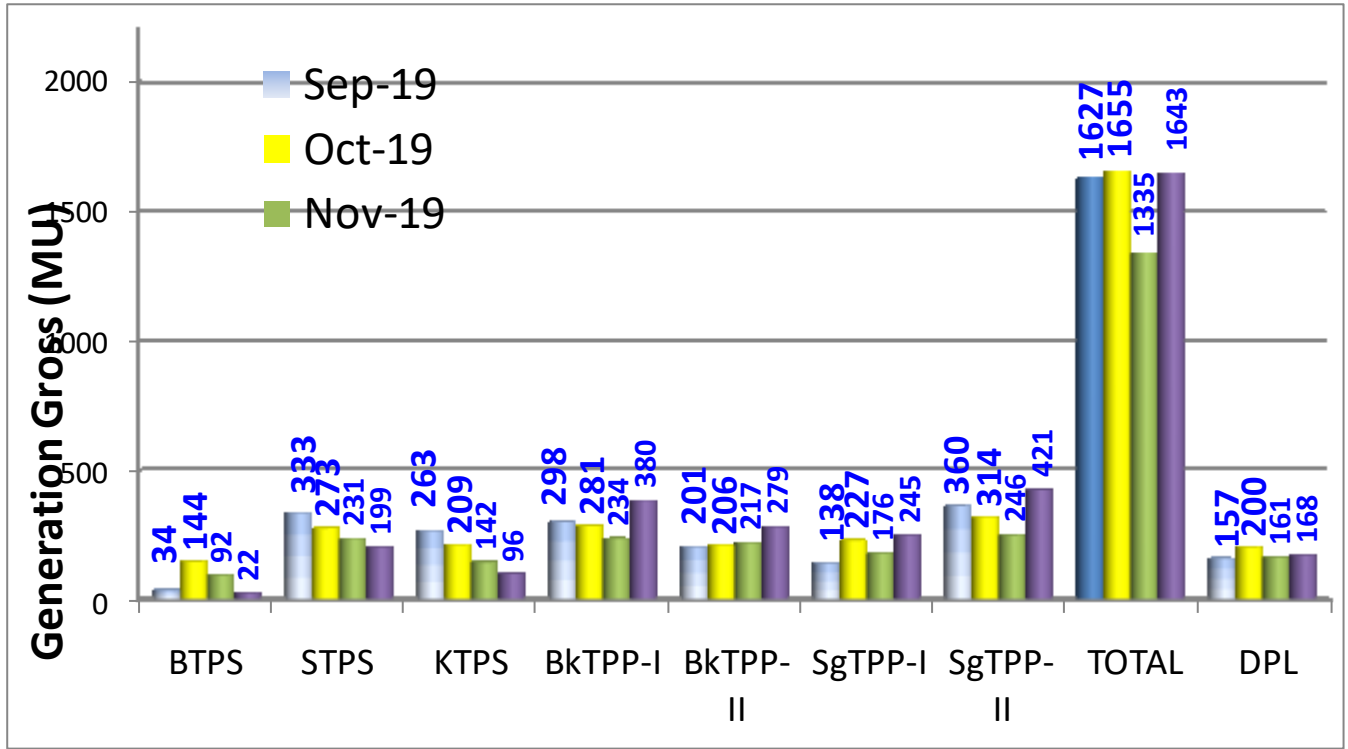
Power point presentation on grid performance for the month of Sept-19, Oct-19, Nov-19 and Dec-19.

Divisional Engineer, SLDC made a Power point presentation on the grid performance based on operational statistics for the period of Sept 19, Oct 19, Nov 19 and Dec 19. A critical analysis on the Sept 19, Oct 19, Nov 19 and Dec 19 grid performance reveals the following:

2.1 Availability of WBPDC power plants in terms of *PAFM for the month of Sept 19, Oct 19, Nov 19 and Dec 19 are as follows:

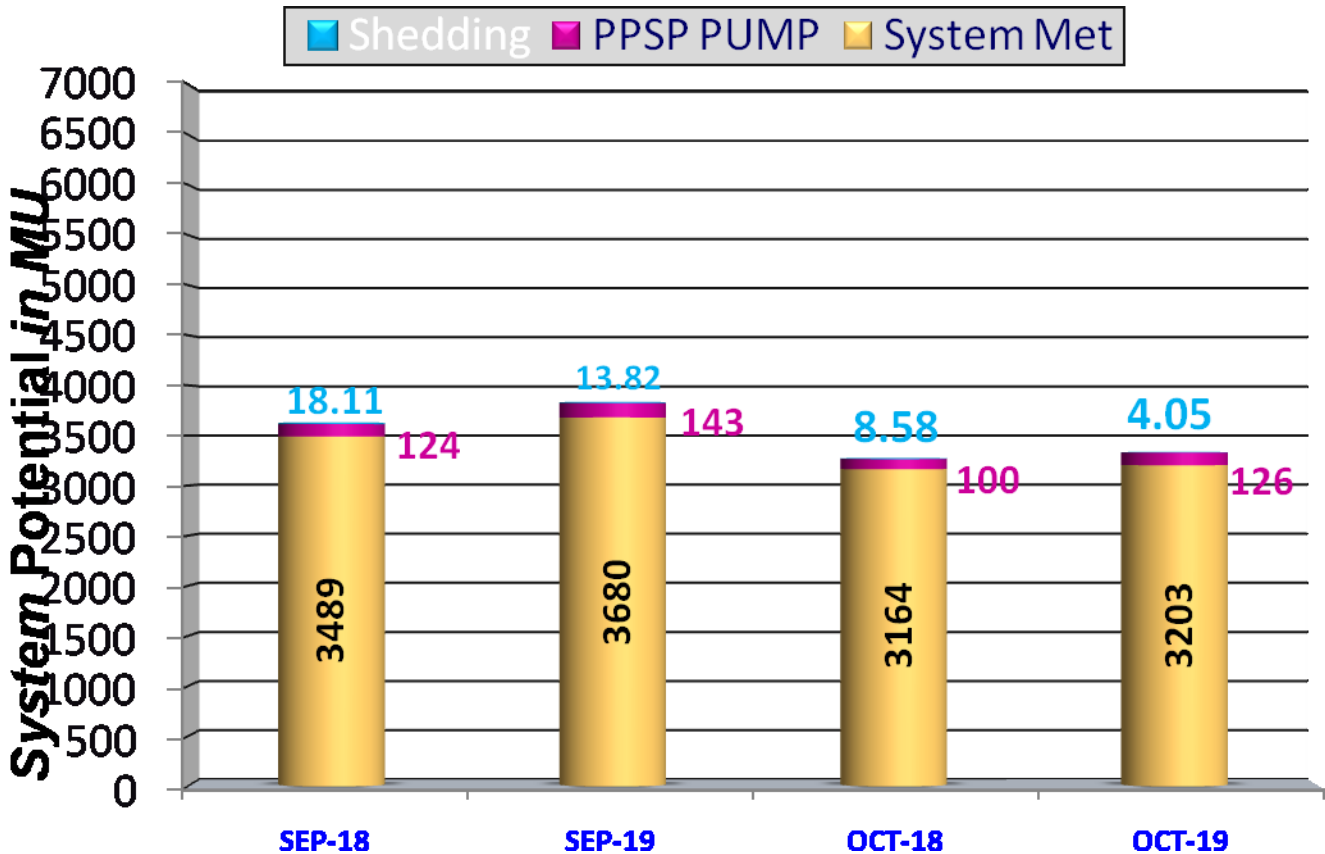


2.2 Gross Generation of WBPDCCL (in MU) during Sept 19, Oct 19, Nov 19 and Dec 19 were as follows:.

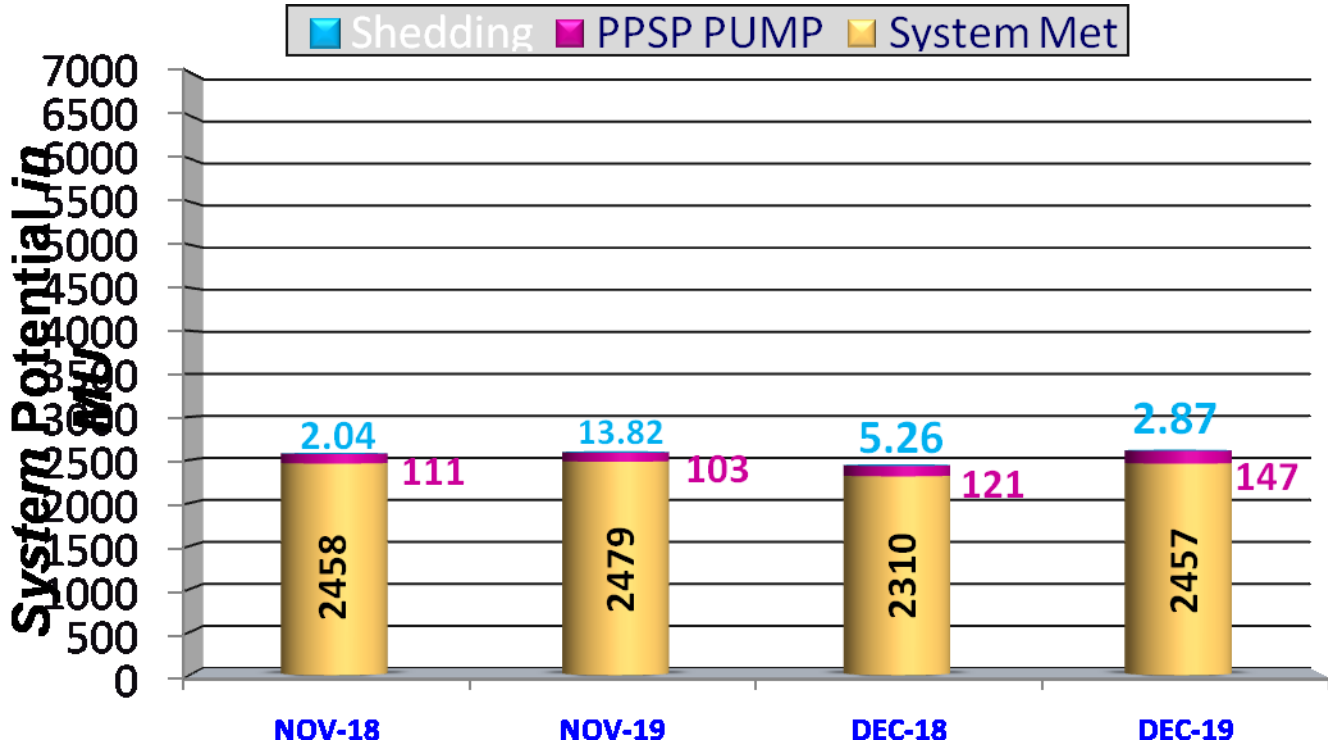


2.3 System met and system Potential of distribution licensees during Sept 19, Oct 19, Nov 19 and Dec 19 were as follows:

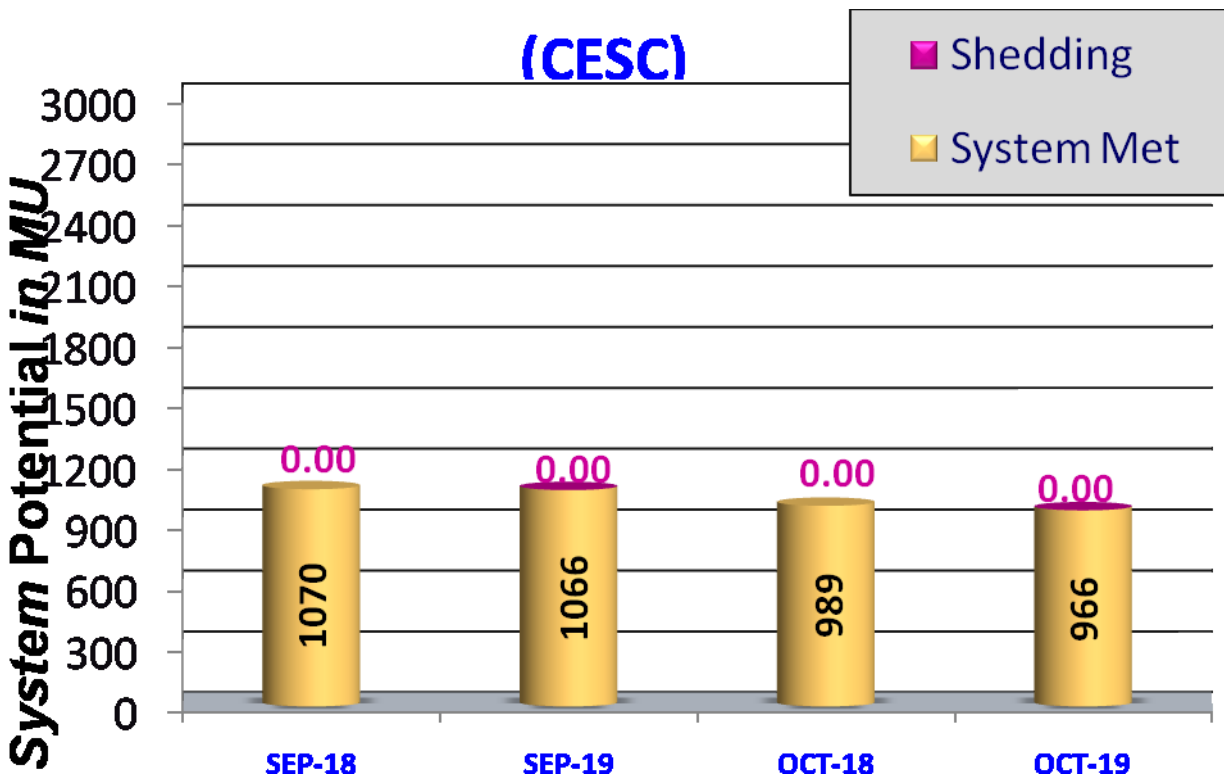
WBSEDCL SYSTEM MET & POTENTIAL (in MU) during Sept 19 to Oct 19.



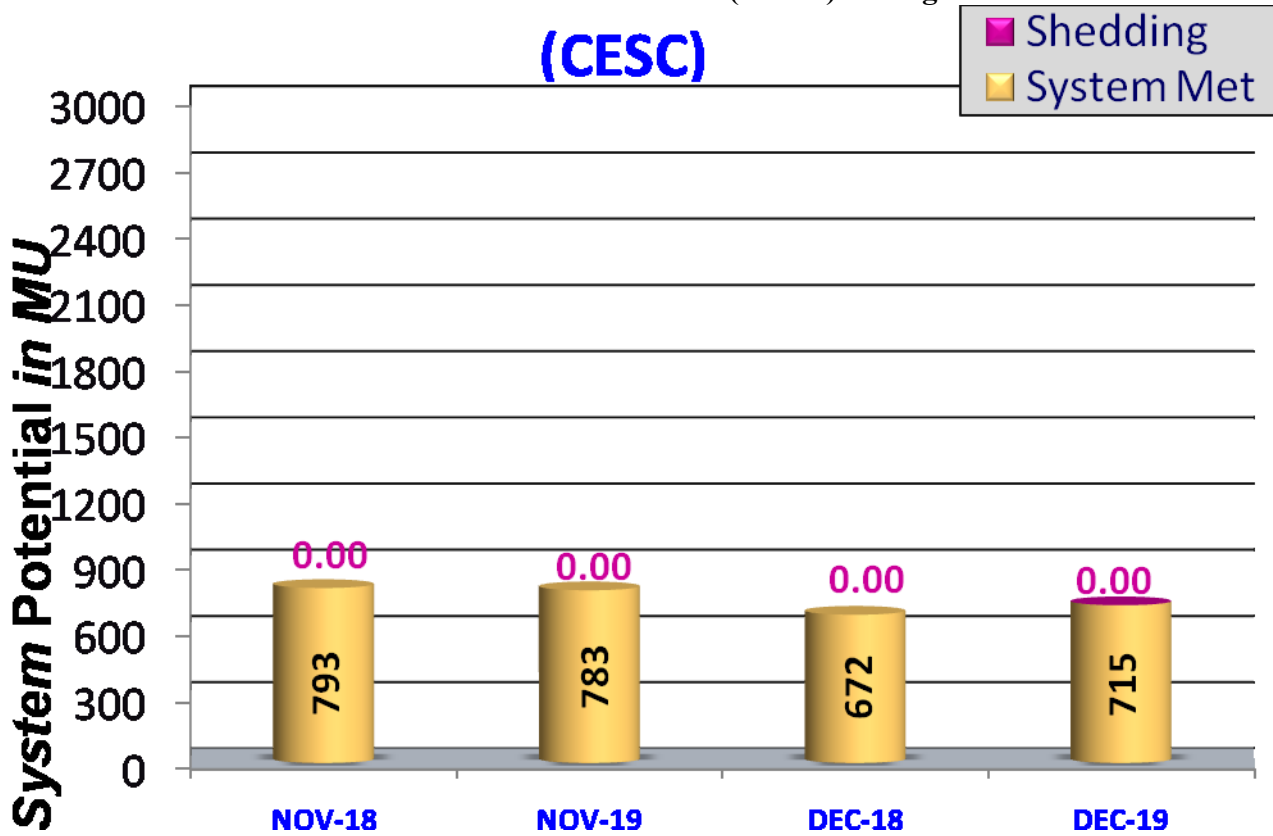
WBSEDCL SYSTEM MET & POTENTIAL (in MU) during Nov 19 to Dec 19.



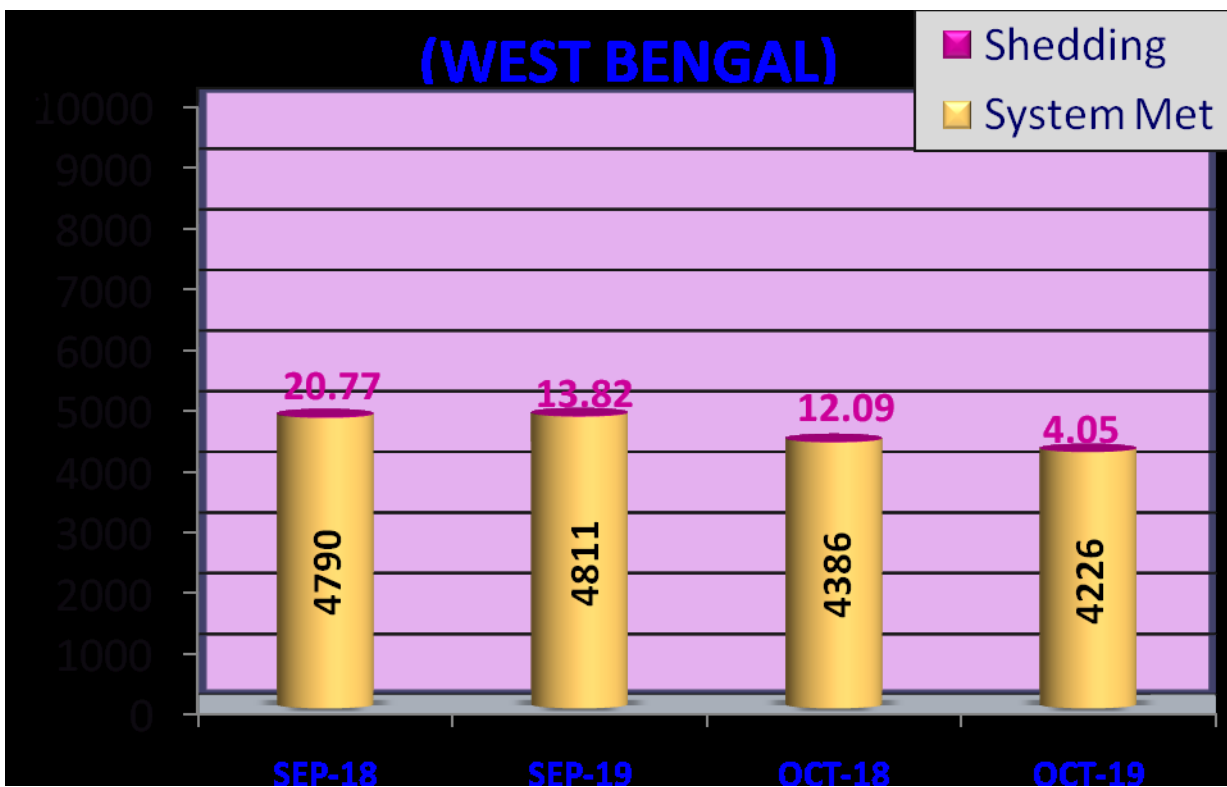
CESC SYSTEM MET & POTENTIAL (in MU) during Sept 19 to Oct 19.



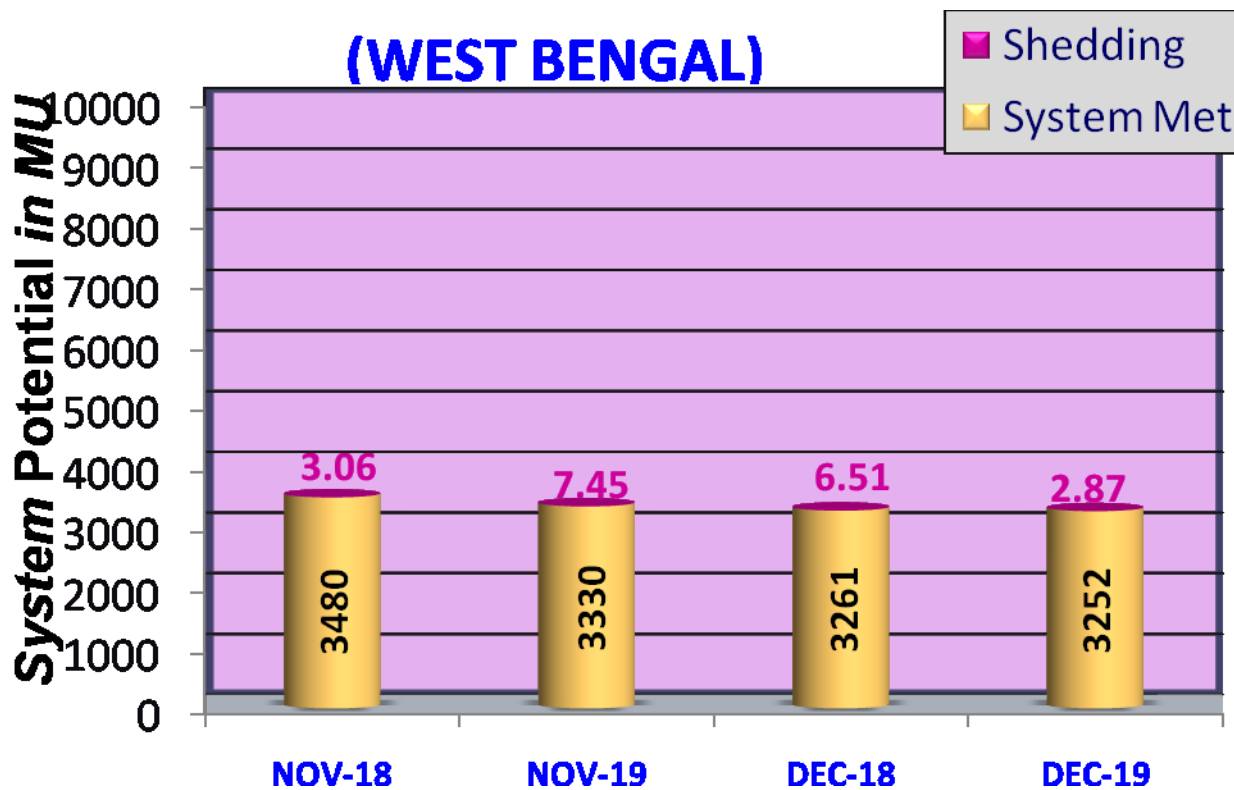
CESC SYSTEM MET & POTENTIAL (in MU) during Nov 19 to Dec 19.



WEST BENGAL SYSTEM MET & POTENTIAL (in MU) during Sept 19 to Oct 19.



WEST BENGAL SYSTEM MET & POTENTIAL (in MU) during Nov 19 to Dec 19.



2.5 The Maximum demand (potential) and their time of occurrence during Sept 19, Oct 19, Nov 19 and Dec 19 were as follows:

WBSEDCL MAXIMUM (POTENTIAL) DEMAND IN MW-----

- SEPT-2019 peak demand 6918 MW, on 20.09.19 at 20.00 hrs.
- OCT -2019 peak demand 6342 MW, on 18.10.19 at 19.00 hrs.
- NOV-2019 peak demand 5164 MW, on 05.11.19 at 18.00 hrs.
- DEC -2019 peak demand 4595 MW, on 11.12.19 at 18.00 hrs.

CESC MAXIMUM (POTENTIAL) DEMAND IN MW-----

- SEPT-2019 peak demand 1881 MW, on 16.09.19 at 18.00 hrs.
- OCT -2019 peak demand 1842 MW, on 21.10.19 at 18.00 hrs.
- NOV-2019 peak demand 1635 MW, on 05.11.19 at 18.00 hrs.
- DEC -2019 peak demand 1377 MW, on 11.12.19 at 18.00 hrs.

WEST BENGAL MAXIMUM (POTENTIAL) DEMAND IN MW-----

- SEPT-2019 peak demand 8759 MW, on 20.09.19 at 20.00 hrs.
- OCT -2019 peak demand 8117 MW, on 18.10.19 at 19.00 hrs.
- NOV-2019 peak demand 6891 MW, on 05.11.19 at 18.00 hrs.
- DEC -2019 peak demand 6071 MW, on 11.12.19 at 18.00 hrs.

The new Transformers, EHT lines and equipments commissioned during this period were also deliberated by D.E, SLDC. (List of new Transformers, EHT lines & equipments are shown in Annexure-1).

ITEM No. 3. IMPORTANT GRID INCIDENTS:

1. On 05.11.19 at 06.52 hrs total power failure occurred at Arambag 400 KV Sub-station.

--- *WBSETCL representatives may please deliberate.*

Deliberation in the meeting.

ACE/Testing, representative from WBSETCL, informed that the Bus fault occurred at 400KV at Bus-I while change-over operation of 400KV Arambag-N.PPSP-II circuit from 400KV Bus I to Bus II. Bus-Differential protection did not operate which resulted in Non-segregation of Faulty bus I.

Non initiation of alarm after operation of Check Zone & main Zone resulted in non-operation of the Bus Zone Differential.

The Check Zone module has been replaced in Arambag to prevent further mal/non operation.

Load Loss: Arambag 26.4 MWh from 6.52hrs to 7.40hrs

Raina 31.03 MWh from 6.52hrs to 7.30hrs

Birshingha 8.8 MWh from 6.52hrs to 7.16hrs

2. Bus fault at Liluah 132 KV sub stn at 02.36 hrs on 27.11.2019 causing power interruption in CESC system and Liluah sub stn. Subsequently CESC system got islanded.

--- *CESC and WBSETCL representatives may please deliberate.*

Deliberation in the meeting.

ACE/Testing, representative from WBSETCL, informed that 132KV bus fault occurred due to bursting of Y-ph of the 132KV Bus PT. Presently No Bus Bar differential present at Liluah 132KV S/S. All 132KV Incoming circuits of Liluah got tripped from far ends with Z-2 distance protection.

CESC Ltd. Representatives deliberated that as the Time Delay in the Islanding Opt. of CESC system is 300ms, CESC got islanded before the Zone-2 DP (Time delay 350ms)operated at Howrah 220KV S/S.CESC was synchronised at Howrah 220KV S/S at the time of this incident.

The Forum advised installation of 132KV Bus-bar differential protection at Liluah(already in pipeline as informed by ACE,Testing). CESC representatives also sought a bilateral dialogue with WBSETCL to explore the possibilities to overlap the CESC islanding settings with Zone-2 settings at Howrah 220KV S/S end.

Load Loss: Liluah 132KV 15.6 MWh from 2.36hrs to 3.05hrs

CESC : 1.75 MWh from 2.36hrs to 2.41hrs

Liluah(trac.): 0.33 MWh

HM+Dankuni : 2.6 MWh from 2.36hrs to 3.05hrs

3. On 29.11.19 at 11.40 hrs total power failure occurred at 132 KV AB -Zone Sub-stn, Durgapur.

--- WBSETCL representatives may please deliberate.

Deliberation in the meeting.

DPL representative informed that the Trip Coil of CB i.r.o 132KV Bidhannagar ckt 2 at DPPS end got burnt which resulted in non-tripping of the breaker and subsequent operation of back up protection resulting in no-power condition of the DPPS bus.

DPL representative also informed that the said Trip Coil has been replaced.

Generation Loss: PCBL 18MW from 11.40hrs to 13.25hrs

Load Loss: DPL 140MWh.

4. 220 KV Sadaipur ckt#2 B phase CT burst out at Gokarna 220 KV sub-stn subsequent tripping of all 220 KV feeders on 06.12.19 at 11.00 hrs.

--- WBSETCL representatives may please deliberate.

Deliberation in the meeting

ACE,Testing representative of WBSETCL informed that the The C.B. i.r.o Sadaipur ckt2 at Gokarna 220KV ckt did not trip although Relay Indiaction appeared (C-N fault),which subsequently resulted in tripping of All 220KV circuits from Remote ends via Back Up protection.

The Forum advised WBSETCL to explore the installation of Bus-differential protection scheme at Gokarna 220KV Bus to avoid such occurances.

No Load loss.

ITEM No. : 4. OPERATIONAL PLANNING:-

- (a) Anticipated power supply position for the month of February -2020, March-2020 and April-2020 (All figures are in MW) :-

Description	FEBRUARY -2020	MARCH -2020	APRIL -2020
WBPDC Generation	3250	3250	3550
WBSEDCL Own Maximum Demand	5300	6600	6900
CESC Maximum Demand	1550	1800	2160
CESC Own gen. + HEL + IPP/ CPP	760+540+45=1300	820+540+45=1360	820+540+45=1360
DPL Generation Availability	360	360	360
IPCL demand connected to J.K.Nagar system	120	125	125

(b) Finalization of Shut Down proposal for the month of February -2020, March-2020 and April-2020 i.r.o. Generating Units, Transmission Lines and other equipments etc. as provided by the constituents.

(i) SHUT DOWN APPROVED FOR WBPDC, WBSEDCL, CESC and OTHER GENERATING UNITS:

UNIT	DURATION	REMARKS
KTPP #4	01.02.2020 to 15.03.2020	Boiler Overhauling
SgTTP #3	01.02.2020 to 29.02.2020	Boiler Overhauling

ITEM No: 5. AGENDA NOTE PUT UP BY SLCF MEMBERS FOR DISCUSSION:

1.1. Agenda note put up by BkTTP

A. It has been observed in the past that during backdown time SG was reduced less than 10 MW in first block of ramp down (for both Stage-1 and Stage-2 units) and in the second block, SG was reduced 90 MW for stage 1 and 60 MW for stage-2. This type of SG is impossible to maintain. So it is requested that in the first block of ramp down during backdown, SG value to be reduced to atleast 50 % of maximum value of ramp down system for 1st block.

Deliberation in the meeting:

On this issue, representative of WBSLDC said that as there is no specific guideline regarding schedules of Generators during ramping up or ramping down, any change in the practice presently followed will be more complicating which will not only invite further confusions but also result in uneconomical operations.

B. Auto refresh system of SLDC website is still not available.

Deliberation in the meeting:

On this issue, representative of WBSLDC has informed that they have already taken up the matter with the vendor for auto refresh system at WBSLDC website.

C. WBSEDCL did not agree with the proposal that DC for unit back down should be credited during ramp up process, that is from unit synchronization to achieving full load in the 59th SLCF meeting but representative of WBSEDCL did not mention any specific reason for that. So, we once again demand that the capacity charge during ramp up process (after withdrawal of Unit back down) to be credited from unit synchronization to achieving at least minimum technical load.

Deliberation in the meeting:

The representative of WBSEDCL mentioned that during ramping up of a newly synchronized machine there may be several complications. Thus, the time required to achieve full generation may vary widely from case to case. In some cases the newly synchronized machine may not reach full load at all. Therefore, allocating DC till full load is achieved may not be always a practical proposition. Therefore, to avoid further complications, present practice should continue. WBSLDC representative agreed.

- D. Carrier signal failure (PLCC) of both channels, of 400kV Bakreswar- Jeerat Line feeder, is coming frequently on/from 13/11/2019 evening. It is persisting for one/two minute and getting reset automatically. After 05-06(Five) minutes later, the signal failure of both channels is coming again. This is mostly happening in evening time after 17:00 hrs.

Testing Dep't of Bktppt has checked the signal strength at PLCC panel at BKTPP end [Receive Signal at co-axial point] repetitively & found (-16 DB) instead of min value of (-14 DB), each time. In this condition, the trouble may please be resolved for successful A/R [During zone#1 & zone#2 faults of both end] as early as possible. If required, end to end test can also be conducted. Since this PLCC system is under 05(Five) years warranty period & controlling authority is WBSETCL Communication, Abhiskhan, so, you are requested to depute Service Engineer of M/S CGL as early as possible.

You were mailed regarding this on 27/11/2019. Prior to that Mr. Tipuram Das visited the Bakreswar Thermal Power Plant on 11.10.2019 and found same problem persisting. After replacing the processor module (PTPL-4) now link/system made stable. But again the trouble is occurring.

Please resolve the issue as early as possible.

Deliberation in the meeting:

On this issue, the house advised BkTPP to take up the matter with Communication wing, WBSETCL.

5.2 Agenda note put up by KTPS

As per minutes of 54th SLCF meeting (Point no 6.2) held on 18.04.2018, the procurement of new APEX meter is to be taken care of by CTD, WBSETCL. But till date the replacement of meter is not initiated.

Deliberation in the meeting:

ACE, Testing, representative of WBSETCL informed that Testing Wing, at present do not have the required no. of meters in Store to replace all the APEX meters at KTPP end. He further stated that if needed KTPP may itself procure the required meters and if required Testing Dept., WBSETCL will provide KTPP with the technical specifications of the same.

5.3 Agenda note put up by BTPS

A. WBSETCL(Adisaptagram/Khanyan) sometimes require entry inside BTPS premises. BTPS faces difficulty in getting required documents from WBSETCL for issuing necessary entry pass.

Deliberation in the meeting:

Forum asked WBSETCL representative to take up this matter with concerned authority so that the contractual staff of WBSETCL entering the premises of BTPS carry the required documents(Insurance certificates/PF documents) to facilitate their smooth entry.

B. Unit shutdown DC for BTPS Unit-1 (06.10.19 to 17.10.19) received from SLDC where in, it is found that much lower DC is allowed compared to what it should be as per minutes of 46th SLCF meeting dated 15.09.2016.

Deliberation in the meeting:

WBSLDC representative stated that the allocation of DC was done as per present practice and norms.

ITEM No: 7. Date and venue of next SLCF (i.e. 61th) Meeting.

Date and venue of next SLCF meeting will be intimated later.

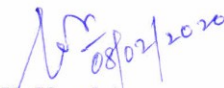
ITEM No: 8

Miscellaneous:

i) KTPP requested for 190MW additional Capacity instead of the 37MW allotted by SLDC for Unit#4 which was not allowed to synchronise by WBSEDCL due to Low System Demand.

Deliberation in the meeting:

WBSLDC representative stated that in such cases the Additional Capacity charge is calculated considering the maximum generation of the Unit for 12 hours after synchronisation to the Grid. Thus the Forum requested KTPP to furnish the 12hrs generation availability data for Unit#4 after its synchronisation to the Grid. The Forum also advised KTPP to furnish the 12hrs generation availability data of all such Units(Unit#3 & Unit#5) synchronised after LSD so that their Additional Capacity can also be revised by WBSLDC.


(P. K. Kundu)
C.E., SLDC, WBSETCL.

Annexure -I***New Transmission lines & Equipment***

<u>Newly Commissioned Sub-stations</u>			
Sl. No.	Location	Identification of equipments	Date & Time
1	132 KV Dinhata (GIS) sub/stn	132 KV Coochbehar-Dinhata ckt	Charged on 30.09.19 at 15.00 hrs from Coochbehar and closed at Dinhata at 16.15 hrs.
		132 KV Mathabhanga-Dinhata ckt	Charged on 30.09.19 at 15.58 hrs from Mathabhanga and closed at Dinhata at 16.16 hrs.
		132 KV GIS Bus-coupler breaker	Charged at 16.28 hrs of 30.09.19
		132/33 KV,50 MVA TR#1	Charged at 16.31 hrs(HV) & 17.10 hrs(LV) of 30.09.19
		132/33 KV,50 MVA TR#2	Charged at 16.32 hrs(HV) & 17.11 hrs(LV) of 30.09.19
2	132 KV Basirhat sub/stn	132 KV Newtown AA3-Basirhat#2 ckt	Charged on 24.09.19 at 20.24 hrs.
		132 KV Newtown AA3-Basirhat#1 ckt	Charged on 27.09.19 at 20.05 hrs.
		132 KV Ashoknagar-Basirhat#2 ckt	Charged on 28.09.19 at 19.55 hrs.
		132 KV Ashoknagar-Basirhat#1 ckt	Charged on 30.09.19 at 16.45 hrs.

3	220 KV Rejinagar AIS Sub/stn	220 KV Gokarna-Rejinagar #1 ckt	Charged on 21.10.19 at 20.37 hrs from Rejinagar and closed at Gokarna at 20.38 hrs.
		220 KV Gokarna-Rejinagar #2 ckt	Charged on 21.10.19 at 22.55 hrs from Rejinagar and closed at Gokarna at 22.57 hrs.
		220 KV Krishnanagar-Rejinagar #2 ckt	Charged on 21.10.19 at 20.30 hrs from Krishnanagar and closed at Rejinagar at 21.01 hrs.
		220 KV Krishnanagar-Rejinagar #1 ckt	Charged on 21.10.19 at 21.13 hrs from Krishnanagar and closed at Rejinagar at 21.44 hrs.
		132 KV MB # 1	Charged on 23.10.19 at 13.06 hrs
		132 KV MB # 2	Charged on 23.10.19 at 13.20 hrs
		132/33 KV 50 MVA Tr#1	Charged with no load on 23.10.19 at 15.03 hrs.
		132/33 KV 50 MVA Tr#2	Charged with no load on 23.10.19 at 15.11 hrs.
		132/33 KV 50 MVA Tr#1 & 2	Both charged with load on 26.10.2019 at 20.20 hrs.
		132 KV Rejinagar-Debogram ckt #1	Charged at no load on 14.11.19 at 17.45 hrs and loaded at 18.00 hrs.
		132 KV Rejinagar-Debogram ckt #2	Charged at no load on 14.11.19 at 17.45 hrs and loaded at 18.01 hrs.
		132 KV Rejinagar-Amtala ckt #1	Charged at no load on 14.11.19 at 18.05 hrs and loaded at 18.27 hrs.
132 KV Rejinagar-Amtala ckt #2	Charged at no load on 14.11.19 at 18.06 hrs and loaded at 18.27 hrs.		

4	132 KV Sonarpur sub/stn	132/33 KV 31.5 MVA Tr # 3 replaced by 50 MVA	Charged at no load on 18.12.19 at 20.46 hrs and loaded on 19.12.19 at 12.44 hrs.
5	400 KV Arambag sub-stn	400 KV 125 MVAR Bus Reactor.	Commissioned and Charged on 11.12.19 at 20.11 hrs.
6	132 KV Jangipara sub station	132/33 KV 31.5 MVA Tr # 1 replaced by 50 MVA	Charged at no load on 18.12.19 at 17.27 hrs and loaded on 19.12.19 at 16.12 hrs.
7	132 KV Khanyan sub station	132/33 KV 31.5 MVA Tr # 2 replaced by 50 MVA	Charged at no load on 17.12.19 at 16.34 hrs and loaded on 18.12.19 at 12.11 hrs.
8	132 KV Gajole sub/stn	132 KV Gajole-Balurghat ckt#1.	Charged at no load on 31.12.19 at 18.12 hrs and loaded on 01.01.20 at 16.05 hrs.
9	132 KV Balurghat sub station	132/33 KV 20 MVA Tr # 3 replaced by 31.5 MVA.	Charged at no load on 31.12.19 at 18.12 hrs and loaded on 01.01.20 at 16.05 hrs.

Memo No. SLDC/ How/ 109/ 2019-20/ 1215(1-36)

Dated : 08/02/2020

Copy for information please:-

1. The Secretary, WBERC, FD-415A, PouraBhavan, 3rd Floor, Bidhannagar, Kolkata-700 106
2. PS to Managing Director, WBSETCL, Vidyut Bhavan, Kolkata-91.
3. PS to Managing Director, DPL, Kolkata -107.
4. PS to Director (Operations), WBSETCL, Vidyut Bhavan, Kolkata-91.
5. PS to Director (RT), WBSEDCL, Vidyut Bhavan, Kolkata-91.
6. PS to Executive Director (OS), WBPDC, Salt Lake City, Kolkata-700 098.
7. C.E, SLDC, WBSETCL, Howrah-09.
8. C.E, Transmission-I, WBSETCL, Vidyut Bhavan, Kol-91.
9. C.E, Transmission-II, WBSETCL, Vidyut Bhavan, Kol-91.
10. C.E, CTD, WBSETCL, AbhiksanBhavan, Kol-91.
11. C.E, Communication, WBSETCL, AbhiksanBhavan, Kol-91.
12. Chief Engineer, CLD, DVC, Howrah.
13. C.E.(PTP) WBSEDCL, Vidyut Bhavan, Kolkata-91.
14. G.M , (SO) CESC Ltd., Statesman House, Kol- 01.
15. G.M. BTPS, WBPDC.
16. G.M. STPS, WBPDC.
17. G.M. KTPP, WBPDC.
18. G.M. BKTPP, WBPDC.
19. G.M. SGTPP, WBPDC.
20. Sri I. B. Chakraborty, Vice-President, Engineering & Projects, IPCL
21. Addl. Chief Engineer, SLDC, WBSETCL, Howrah-09.
22. Addl. Chief Engineer, ALDC, WBSEDCL.
23. Sri N.G.Saha, DGM, WBPDC.
24. Sri A. Sen Gupta, DGM, System Control Department, CESC Ltd, CESC House, Kol- 01.
25. Sri S. K. Sarkar, G.S.(T&D, Load Management), DPSC Ltd.
26. Sri R. Biswas, Sr. Manager, ALDC, DPL.
27. Sri Suhas Ch. Ray Sr.Manager(Operation), KTPP WBPDC.
28. Sri Indrajit Banerjee Manager(Operation), KTPP WBPDC.
29. Sri D. Chanda, Sr.Manager(PS), BKTPP, WBPDC.
30. Mr. Joyanal Abedin, Sr.Manager(E.O.), BKTPP, WBPDC.
31. Sri K. Banerjee, Manager, System Control Department, CESC Ltd, CESC House, Kol- 01.
32. Sri A.Biswas, Manager(PS), BKTPP, WBPDC.
33. Sri F.Hossain, Manager (PS), SGTPP, WBPDC.
34. Sri M.S.Bapari, Manager (PS), SGTPP, WBPDC.
35. Sri M. Mallik, Sr. Manager, (System Operation – Electrical), BTPS, WBPDC.
36. Sri S. Maiti, Sr. Manager (O), STPS, WBPDC.


Convenor, SLCF 08.02.2020